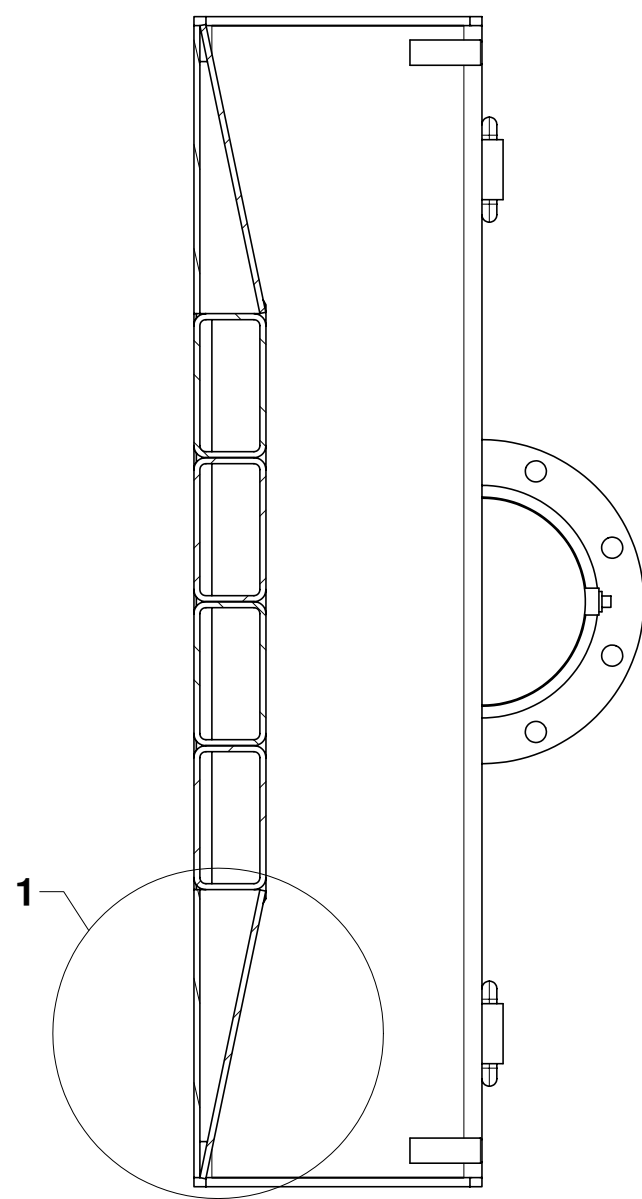
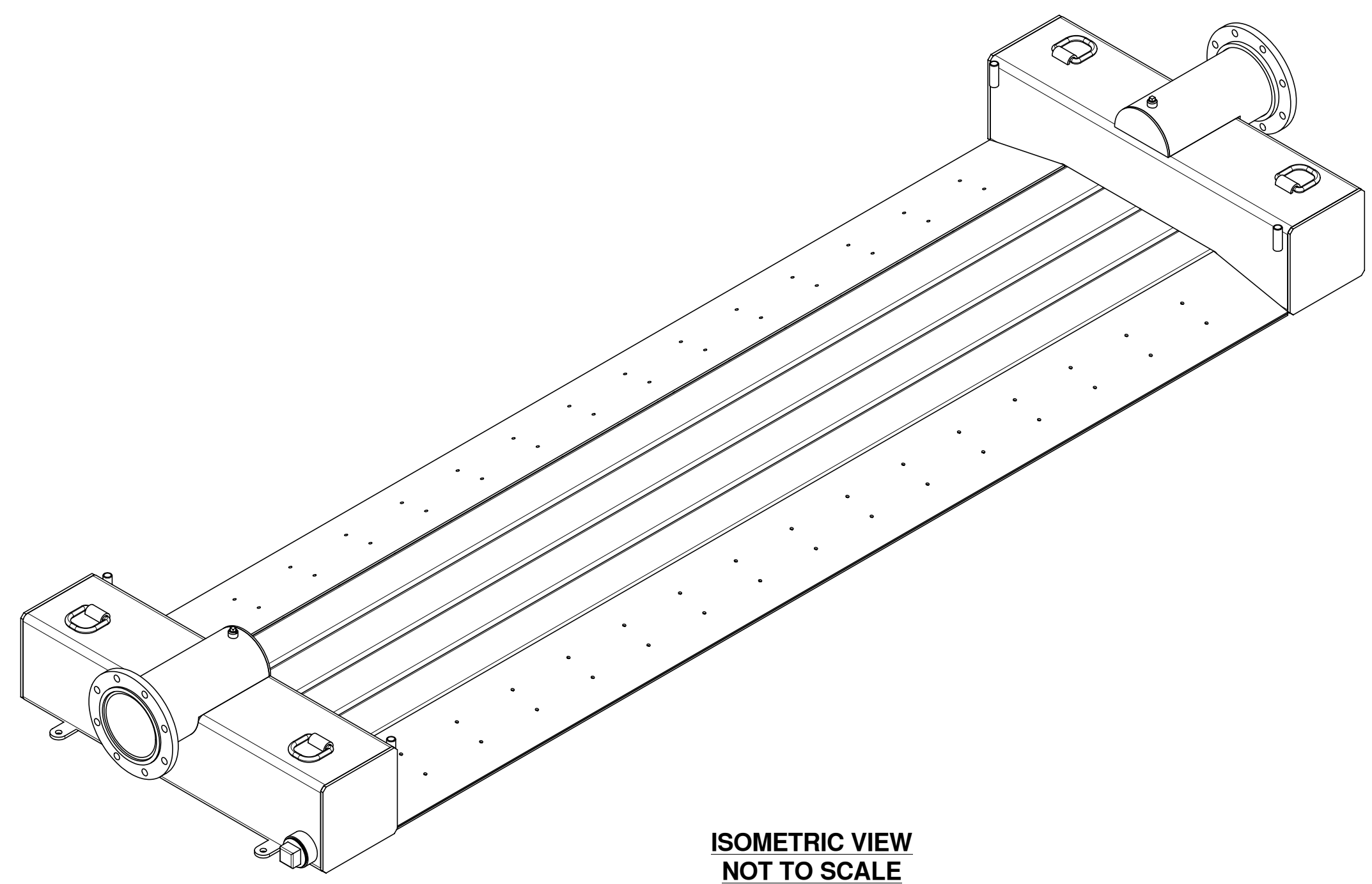
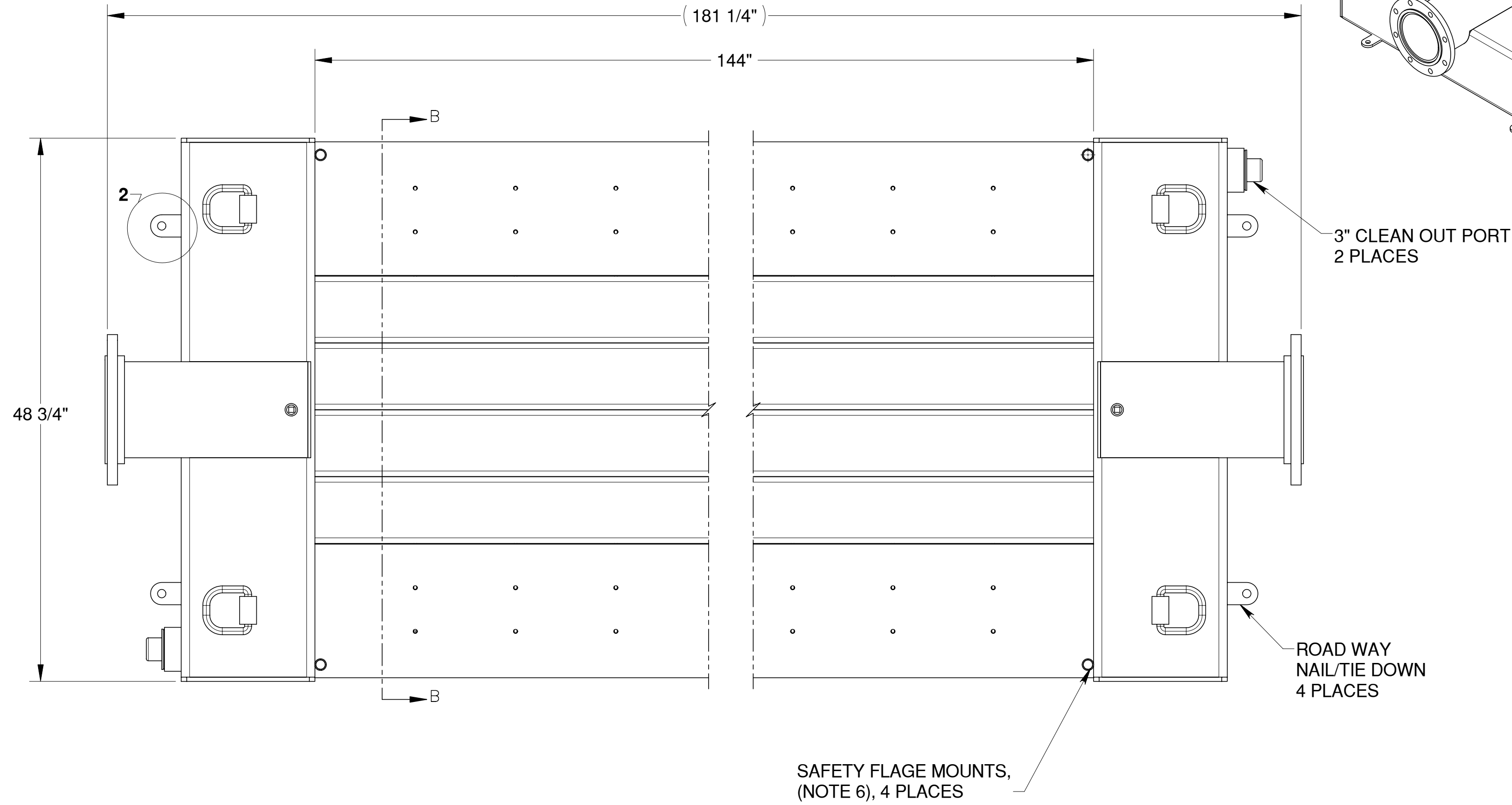


DETAIL 2
SCALE 1 : 4
4 PLACES

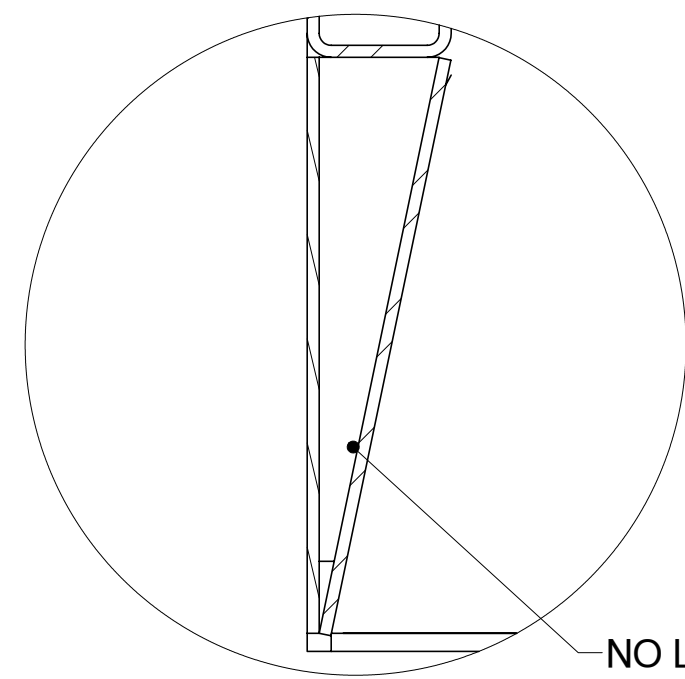


SECTION B-B



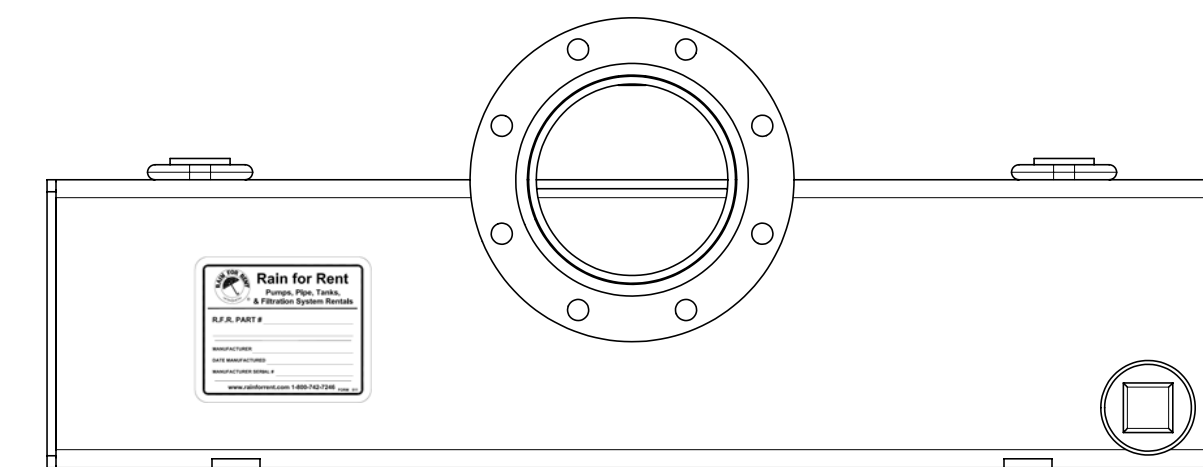
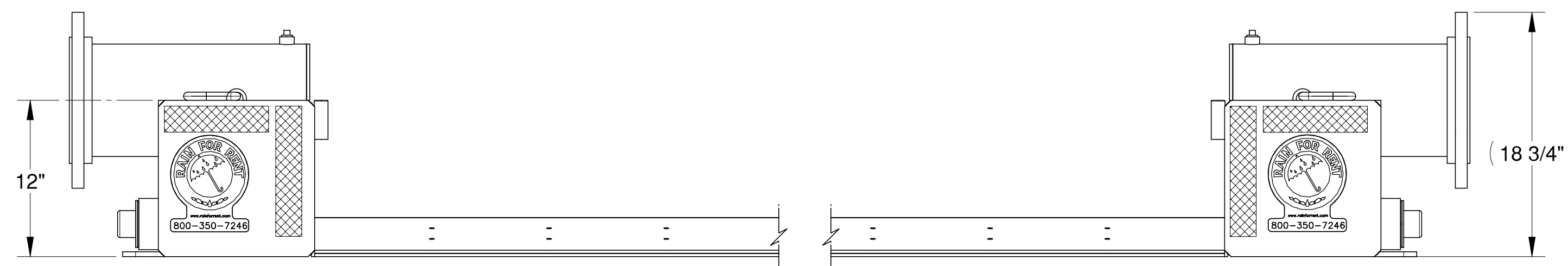
ISOMETRIC VIEW
NOT TO SCALE

- NOTE:**
1. MANUFACTURE GALVANIZE IN ACCORDANCE WITH ASTM A 384 & A 385 STANDARDS.
 2. WORKING PRESSURE 75-PSI MAX.
 3. MOUNTING POINTS FOR STANDARD SAFETY WARNING FLAGS, (GRAINGER ITEM #4A415, 18" X 18" RED/ORANGE WITH 3/4" DIAMETER DOWEL OR EQUIVALENT), (SUPPLIED WITH ROAD CROSSING)
 4. APPROXIMATE WEIGHT - 1,600 LBS. EMPTY.
 5. ALL WELDS MUST COMPLY WITH AMERICAN WELDING SOCIETY WELD CODE AWS STRUCTURAL D1.1
 6. TOUCH-UP WITH ORGANIC ZINK-RICH PAINT COMPLYING WITH MIL-P-21035B OR MIL-P-26915C IN MULTIPLE COATS.



DETAIL 1
SCALE 1 : 4

NO LIQUID
PASSES THROUGH
ANGLED PART



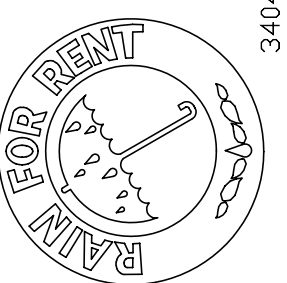
2	ADDED NOTES AND CHANGED 1/4"X12X12 PLATE TO 3/8"X12X12 PLATE	103509~1_1	MS	3/24/2004
1	CHANGED 1/4" WALL, 12X12 SQ. TUBE TO 3/8" WALL	103509~1_1	MS	3/23/2004
REV.NO.	DESCRIPTION	PREV.DWG	BY	DATE

**8" X 12' ROAD CROSSING
ENTRANCE / EXIT RAMPS**

SALES / REFERENCE DRAWING

**Rain For Rent
Engineering**

3404 State Road PO Box 2248 Bakersfield CA 93303



ALL INFORMATION CONTAINED IN OR DISCLOSED BY THIS DOCUMENT IS CONSIDERED CONFIDENTIAL AND PROPRIETARY BY RAIN FOR RENT. ALL DISCLOSURES OF DESIGN INFORMATION AND REPRODUCTION OF THIS DOCUMENT AND ALL SALES RIGHTS ARE EXCLUSIVELY RESERVED BY AND TO RAIN FOR RENT AND COMMUNICATION OF THIS INFORMATION TO OTHERS IS PROHIBITED WITHOUT THE PRIOR WRITTEN CONSENT OF RAIN FOR RENT.

DATE	SCALE
12/11/2003	1:8
DESIGNED BY	
K.KROSS	
CHECKED BY	
K.KROSS	
DRAWN BY	
M.STEVENSON	
JOB NUMBER	
1021213	
DRAWING NUMBER	
103509~1_1	
SHEET	SHT. SIZE REV. NO.
1 of 1	D 2