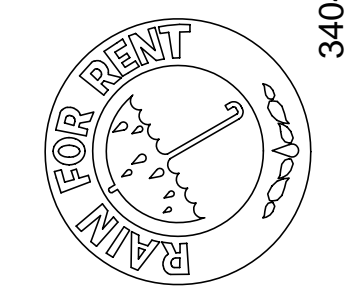


UNLESS OTHERWISE SPECIFIED
 INTERPRET PER ASME Y14.24
 AND Y14.34M, Y14.35M
 ALL DIMENSIONS ARE IN INCHES
 ALL DIMENSIONS BEFORE PLATING
 MACHINED FILLET RADIUS TO BE .020
 SHEET SCALE IS AS LISTED IN TITLE
 BLOCK UNLESS SPECIFIED
 OTHERWISE
 FRACTIONAL: 1/16
 DECIMALS: .010
 .XX = ±.030
 .X = ±.100
 ANGLES: ±0° .30'

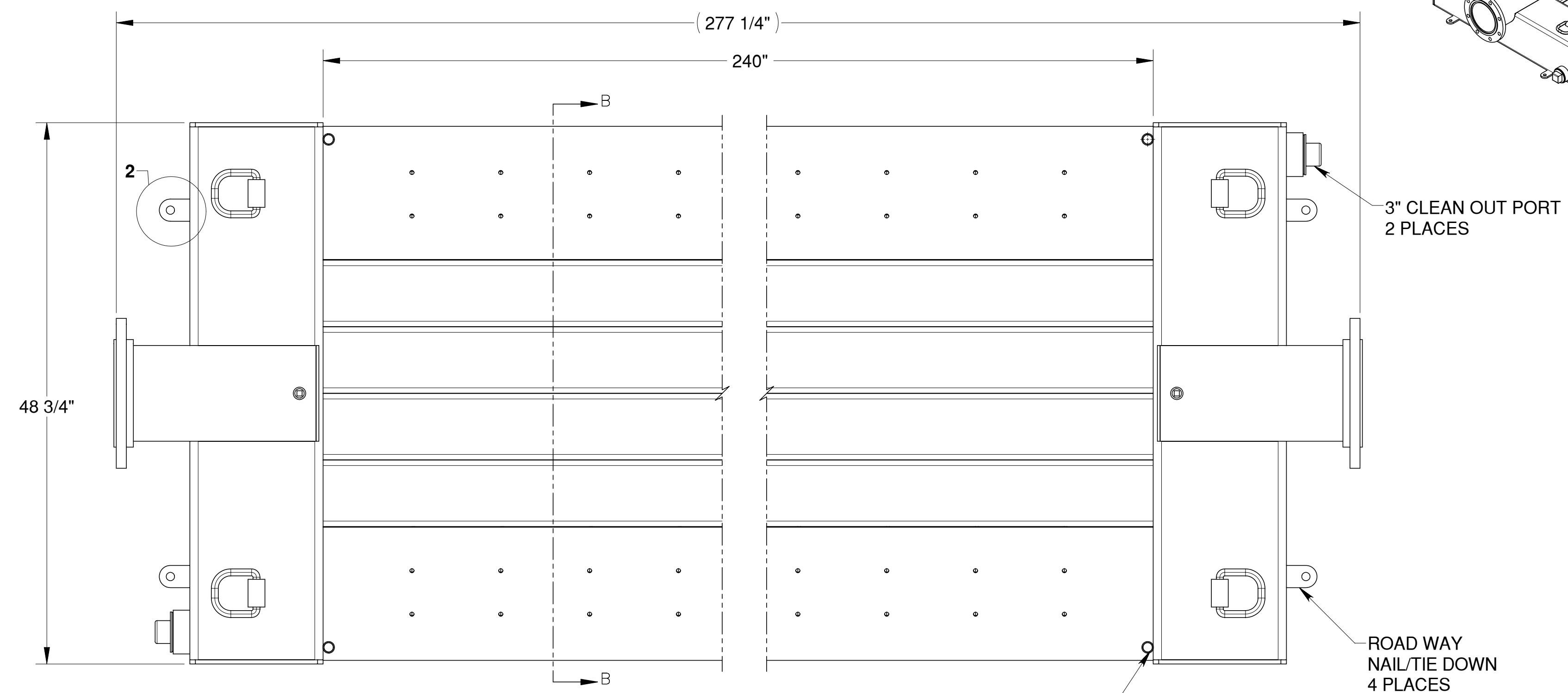
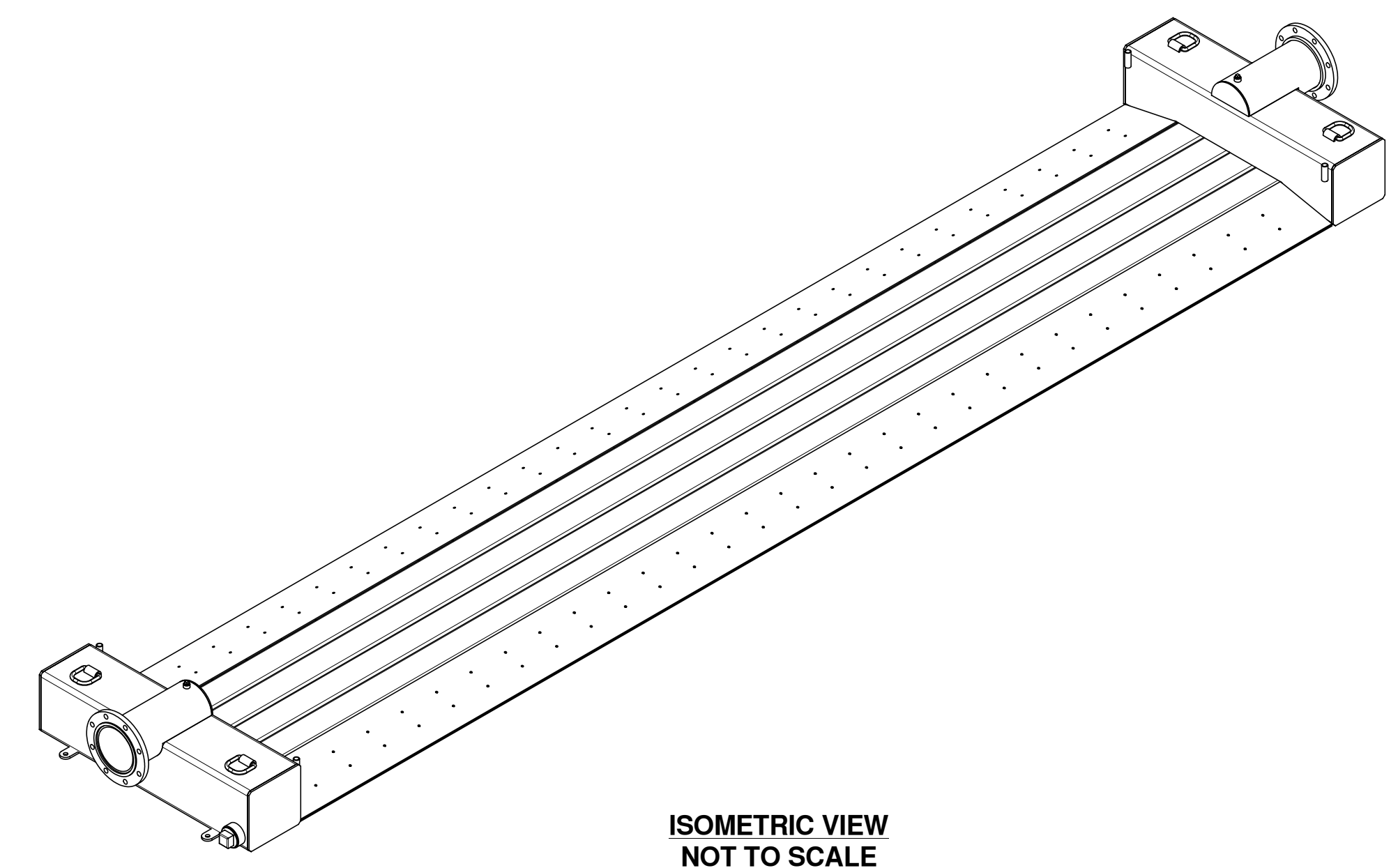
**8" X 20' ROAD CROSSING
 ENTRANCE / EXIT RAMPS**
SALES / REFERENCE DRAWING

**Rain For Rent
 Engineering**
 3404 State Road PO Box 2248 Bakersfield CA 93303

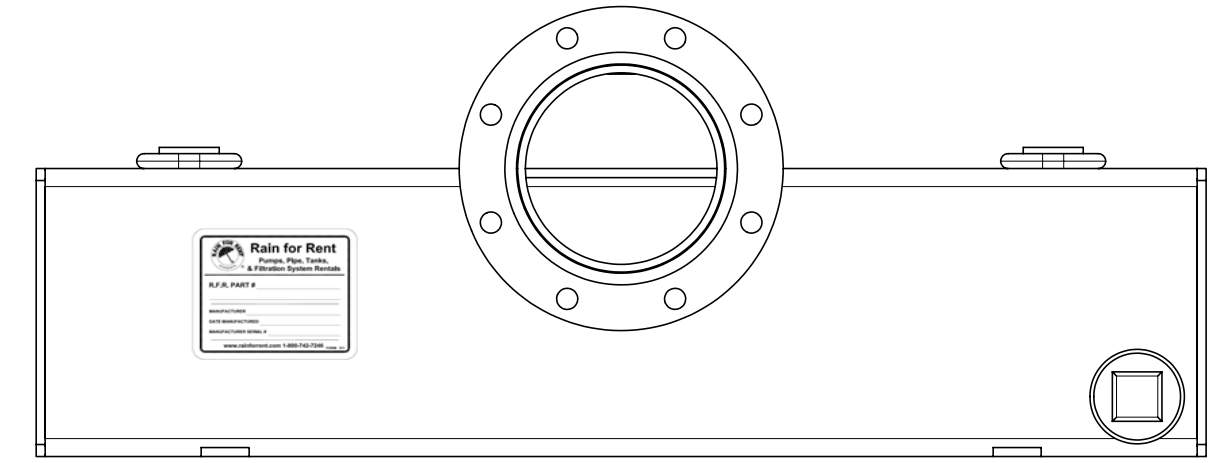
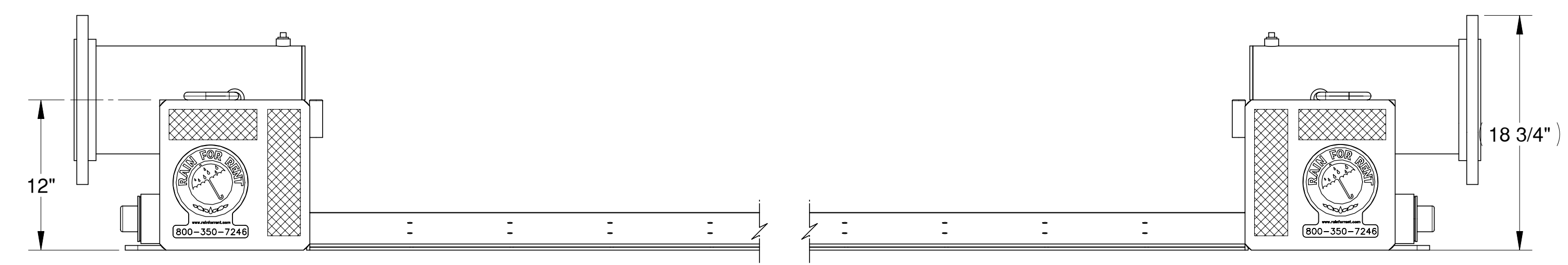
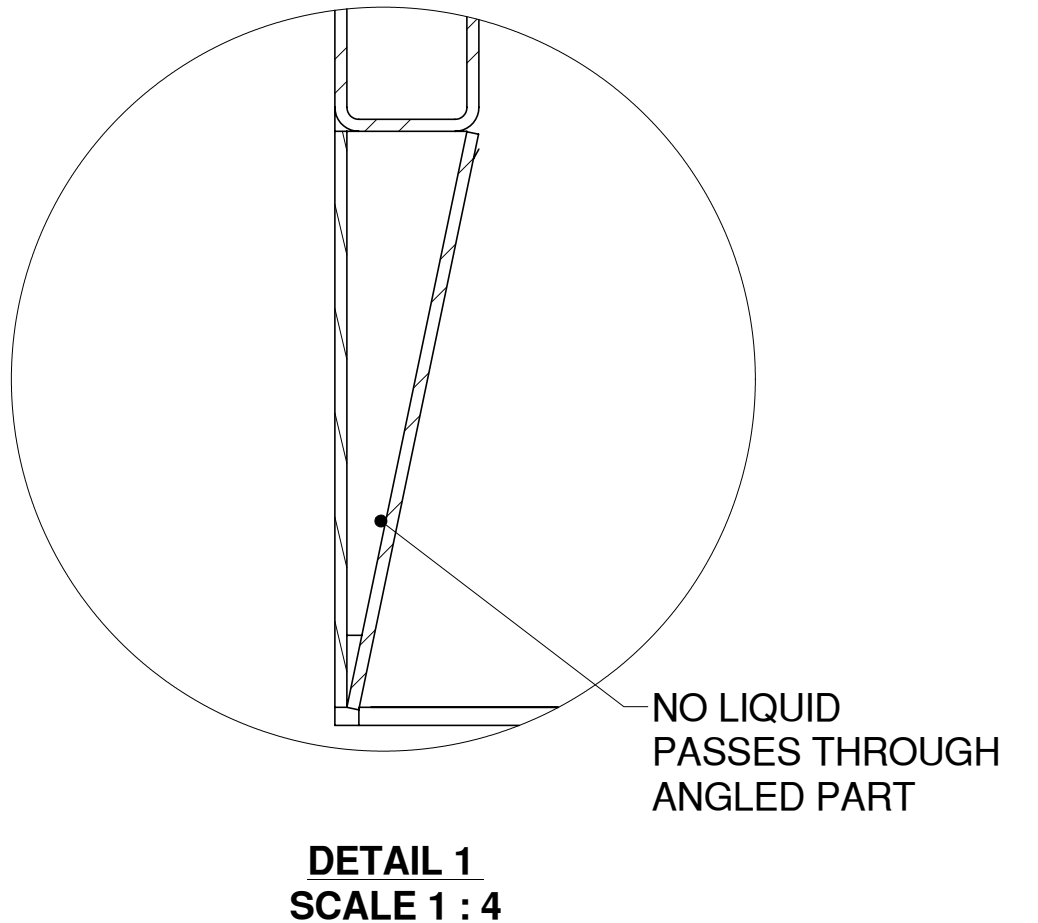
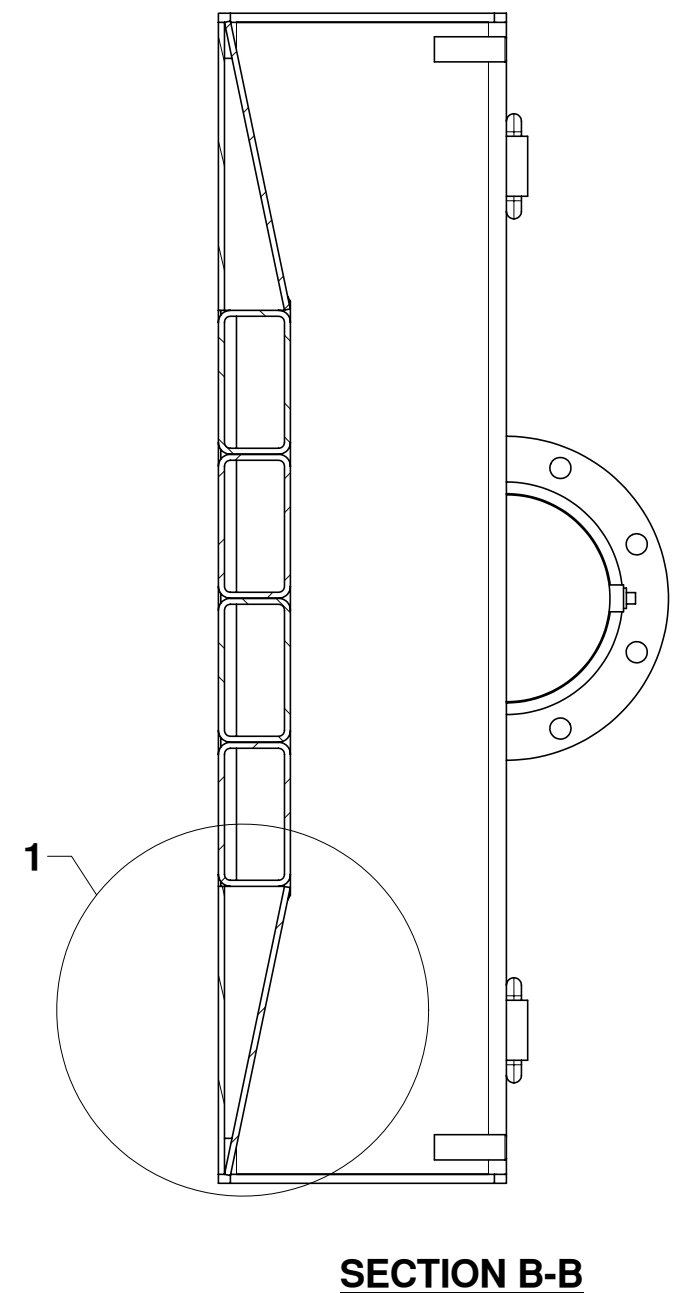
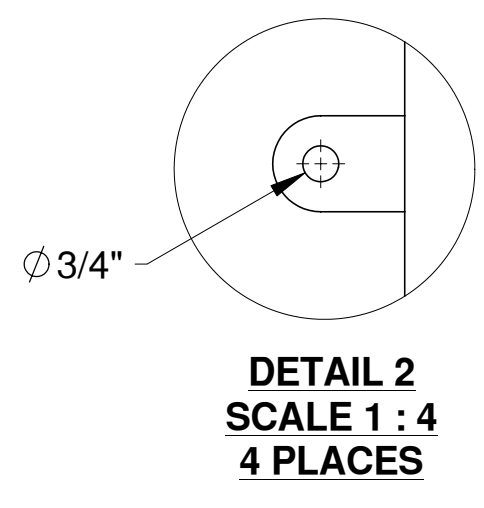


ALL INFORMATION CONTAINED IN OR
 DISCLOSED BY THIS DOCUMENT IS
 CONSIDERED CONFIDENTIAL AND
 PROPRIETARY BY RAIN FOR RENT
 ALL DISCLOSURES OF DESIGN IN-
 FORMATION AND REPRODUCTION OF
 THIS DOCUMENT AND ALL SALES
 RIGHTS ARE EXCLUSIVELY RESER-
 VED BY AND TO RAIN FOR RENT
 AND COMMUNICATION OF THIS IN-
 FORMATION TO OTHERS IS PRO-
 HIBITED WITHOUT THE PRIOR WRIT-
 TEN CONSENT OF RAIN FOR RENT.

DATE: 12/11/2003 SCALE: 1:8
 DESIGNED BY: K.KROSS
 CHECKED BY: K.KROSS
 DRAWN BY: M.STEVENSON
 JOB NUMBER: 1021213
 DRAWING NUMBER: 103509-1_2
 SHEET: 1 OF 1 SHT SIZE: REV: N/A



- NOTE:
 1. MANUFACTURE GALVANIZE IN ACCORDANCE WITH
 ASTM A 384 & A 385 STANDARDS.
 2. WORKING PRESSURE 75-PSI MAX.
 3. MOUNTING POINTS FOR STANDARD SAFETY WARNING
 FLAGS, (GRAINGER ITEM #4A415, 18" X 18" RED/ORANGE
 WITH 3/4" DIAMETER DOWEL OR EQUIVALENT),
 (SUPPLIED WITH ROAD CROSSING)
 4. APPROXIMATE WEIGHT - 2,300 LBS. EMPTY.
 5. ALL WELDS MUST COMPLY WITH AMERICAN WELDING SOCIETY
 WELD CODE AWS STRUCTURAL D1.1
 6. TOUCH-UP WITH ORGANIC ZINK-RICH PAINT COMPLYING WITH
 MIL-P-21035B OR MIL-P-26915C IN MULTIPLE COATS.



REV. NO.	DESCRIPTION	PREV. DWG.	BY	DATE